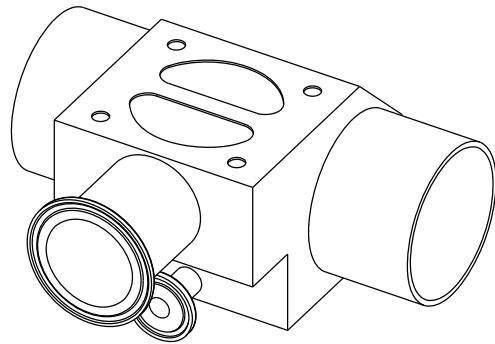
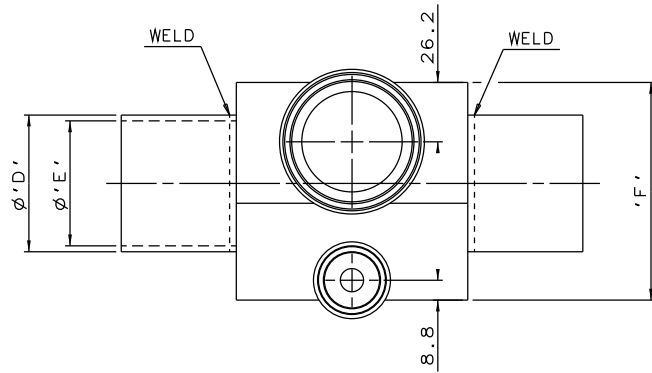
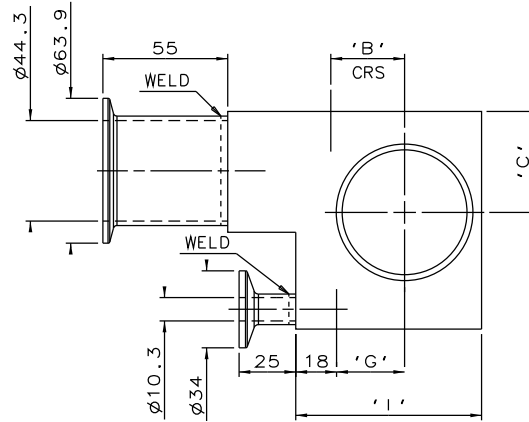
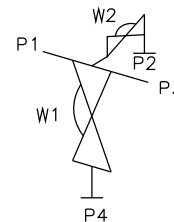
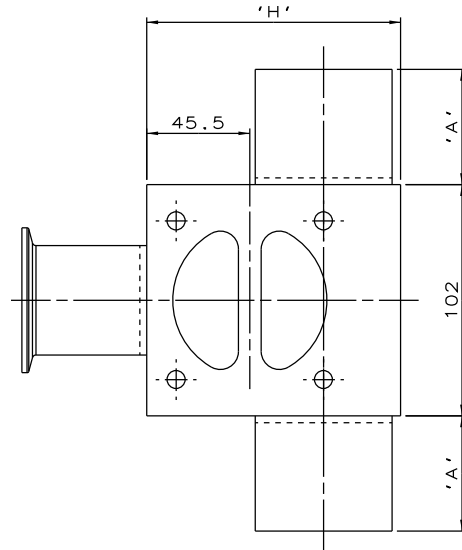


DN40 TO DN50
MAINLINE ONLY



DN65 TO DN100
MAINLINE ONLY



ORIENTATION AS
PER P&ID DIAGRAM
FOR OPTIMUM
DRAINABILITY.

MAINLINE SIZE	A	B	C	ϕD	ϕE	F	G	H	I	BODY WEIGHT
mm	mm	mm	mm	mm	mm	mm	mm	mm	mm	Kgs
DN40	50.8	27.2	48.0	48.3	44.3	96.0	24.7	100.0	70.0	4.9
DN50	50.8	32.6	44.5	60.3	55.1	96.0	30.1	112.0	82.0	5.3
DN65	50.8	40.5	52.0	76.1	70.9	94.1	38.0	128.0	98.0	4.4
DN80	50.8	46.9	57.0	88.9	83.7	105.0	44.4	141.0	111.0	5.1
DN100	101.6	59.6	65.0	114.3	109.1	126.0	57.1	166.0	136.0	7.0

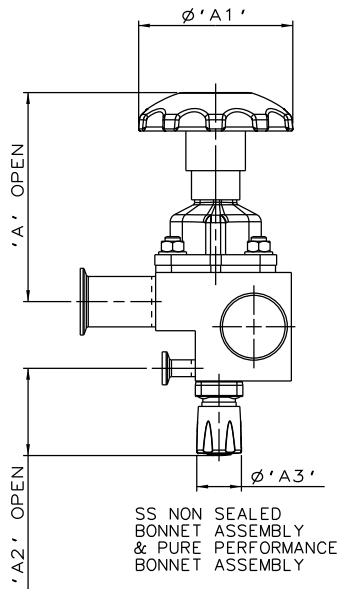
The information on this sheet is Private and Confidential and is the property of Crane Process Flow Technologies Limited and must not be published directly or indirectly in any manner whatsoever without the written permission of the Company and must not be used in any way detrimental to their interests.
© Crane Process Flow Technologies

CRANE Process Flow Technologies
A Crane Co. Company

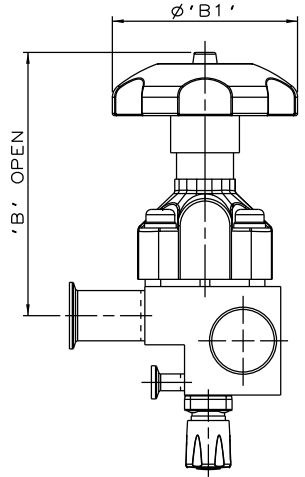
Saunders
The Science Inside

Title
SCHEDULE OF LEADING DIMENSIONS FOR DN40 WEIR
'T' BODY WITH DNS BACK SAMPLE COMPLETE WITH :
MAINLINE : BUTT WELD ISO 1127 S1 TUBE ENDS
BRANCH : HYGIENIC CLAMP END WITH ISO 1127 S1 BORE
SAMPLE : HYGIENIC CLAMP END WITH ISO 1127 S1 BORE

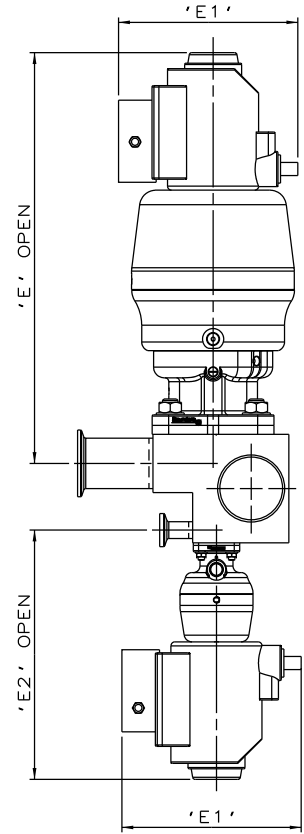
Drawn R1	Date 25.05.12	UNCONTROLLED IN HARD COPY FORMAT	
Checked JRD	Date 25.05.12	Drawing No.	Issue.
First Angle Projection Method E		DO NOT SCALE	1
		WEB-226	



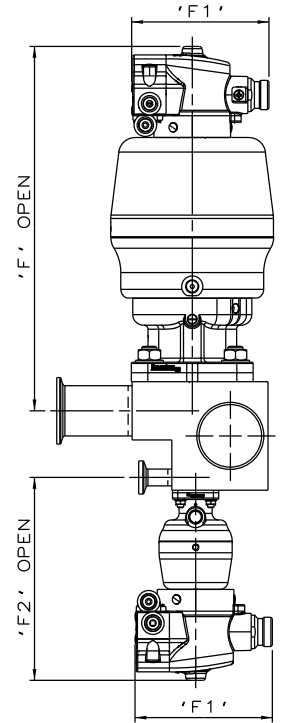
SS NON SEALED
BONNET ASSEMBLY
& PURE PERFORMANCE
BONNET ASSEMBLY



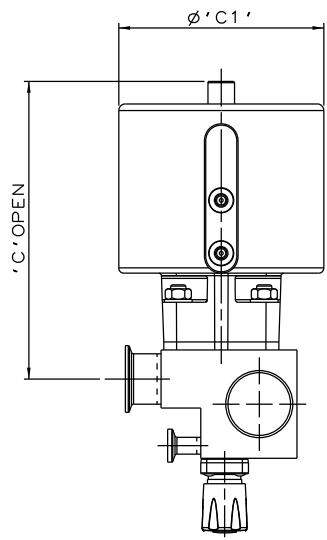
PES BONNET
& PURE PERFORMANCE
BONNET ASSEMBLY



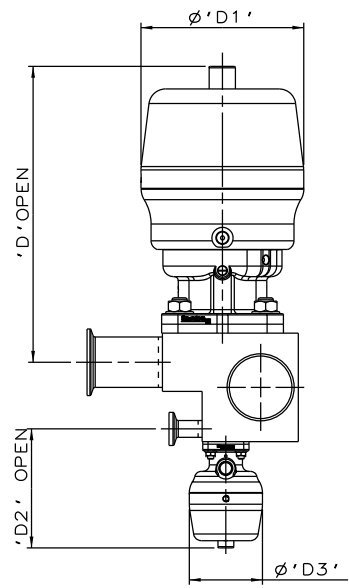
*S360 ACTUATORS
WITH I-VUE SENSOR



*S360 ACTUATORS
WITH M-VUE SENSOR



EC ACTUATOR (ALL MODES)
& PURE PERFORMANCE
BONNET ASSEMBLY



*S360 ACTUATORS

BLOCK CAN BE FITTED WITH ANY EXISTING
SUITABLE TOP WORK COMBINATIONS

The information on this sheet is Private and Confidential and is the property of Crane Process Flow Technologies Limited and must not be published directly or indirectly in any manner whatsoever without the written permission of the Company and must not be used in any way detrimental to their interests.
© Crane Process Flow Technologies

CRANE	Process Flow Technologies A Crane Co. Company	Saunders The Science Inside
--------------	--	---------------------------------------

Title
SCHEDULE OF LEADING DIMENSIONS FOR DN40/1.50
WEIR 'T' BODY WITH DN8/0.25 BACK SAMPLE WITH MAINLINE
BUTT WELD ISO 1127 S1 TUBE ENDS, BRANCH AND SAMPLE
HYGIENIC CLAMP ENDS WITH ISO 1127 S1 BORE.
FITTED WITH TOPWORKS OPTIONS

Drawn R1 Date 09.05.17 UNCONTROLLED IN
Checked RND Date 09.05.17 HARD COPY FORMAT

First Angle Projection DO NOT SCALE Drawing No. WEB-226-ASSY Issue. 1

*DIMENSIONS SHOW MAXIMUM ENVELOPE FOR ALL MODES

BRANCH/SAMPLE SIZE		A		A1		A2		A3		B		B1		C		C1		D		D1		D2		D3		E		E1		E2		F		F1		F2	
mm	inch	mm	inch	mm	inch	mm	inch	mm	inch	mm	inch	mm	inch	mm	inch	mm	inch	mm	inch	mm	inch	mm	inch	mm	inch	mm	inch	mm	inch	mm	inch	mm	inch	mm	inch	mm	inch
DN40xDN15	1.5x0.5	162.2	6.39	120	4.72	65.2	2.57	34.0	1.34	203.2	8.00	140	5.51	229.2	9.02	155	6.10	228.2	8.98	123	4.84	88.8	3.50	55	2.18	315.2	12.4	136.0	5.35	187.8	7.39	279.2	10.99	103.8	4.09	153.8	6.06